

Art for Your Home

Paintings & Prints



31) Sue Malthus - 'In My Auntie's Garden' Fence Paling

Sue Malthus is a Wellington contemporary painter and printmaker. Printmaking is her passion. Many of Sue's works have been exhibited in New Zealand and overseas over the last ten years.

Sue has kindly donated the eye-catching "In My Auntie's Garden" fence paling, created in acrylic, oil, gold leaf and resin (1045mm x 145mm).

<http://www.suemalthus.com>

Value \$450



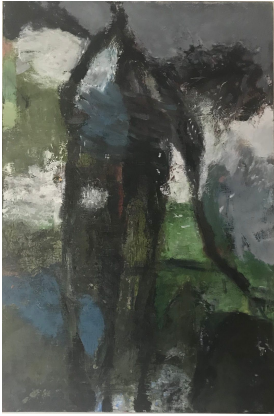
32) Michelle Freeborn - 'Worser Bay at Sunset' Framed Giclee Print

Talented artist Michelle Freeborn has kindly gifted "Worser Bay at Sunset", a framed limited edition Giclee print (3 of 200) of an original painting (330mm x 250mm).

Set on the hill overlooking the Worser Bay Lifesaving Club, this delightful piece in warm hues, will tug at the heartstrings of anyone who lives nearby

<http://www.michellefreeborn.com/>

Value \$120



33) Jolanda Norris - 'Imprints of the Past' Original Artwork

Wellington artist Jolanda Norris grew up in the Netherlands around the corner from the museum housing the famous Mondrian paintings - an inspiration in later life and work.

The artist's inspiration for this striking piece is taken from observing the goings on outside of her window (915mm x 670mm).

Value \$400



34) Gill Newland - 'Map of the Surface II' Original Artwork

Gill Newland is a finalist and Merit recipient of the 2016 Parkin Drawing Prize and a finalist in 2017. Gill describes her style as being 'purely abstract. There is no image or outside referent'.

This hypnotically beautiful framed piece (660mm x 630mm) is an original line acrylic on canvas and drafting film and is certainly a statement piece for the home.

Value \$950



35) Michael Browne - 'Shelly Bay Storm' Original Artwork

This is your chance to own a painting by highly acclaimed artist Michael Browne. We are fortunate to have this beautiful, evocative landscape "Shelly Bay Storm" (375mm x 280mm) generously donated by this iconic artist.

Michael has paintings in many public and private collections, including Te Papa Museum. Michael was awarded the Governor General Art Award last November for his lifetime contribution to art.

<http://michaelbrowne.vc.net.nz/>

Value \$600



36) Stephanie Woodman - 'Safari' Original Artwork

The Wellington artist, Stephanie Woodman, is renowned for her vibrant, dreamlike works.

This gorgeous original artwork entitled "Safari" is acrylic on canvas (505mm x 505mm) and is both serene yet vibrant.

<http://www.stephaniewoodman.com>

Value: \$500



37) Stephanie Woodman - 'Stunner' Original Artwork

The Wellington artist, Stephanie Woodman, is renowned for her vibrant, dreamlike works.

Aptly named "Stunner", this energising palette of turquoise, cerise and black will uplift any space (500mm x 500mm). This is an original piece, created in acrylic on canvas .

<http://www.stephaniewoodman.com>

Value: \$450



38) Belinda Griffiths - 'Cloud Keepsake' Oil on Wooden Trinket Box

Drawing upon her background as a digital artist in the film industry for eight years, Belinda Griffiths uses its technologies to drive her practice, a hybrid of both digital and oil mediums.

Of this memorable piece, Belinda says: "I like the idea of taking a mundane object, like a box, and capturing another world in there — a pure surprise, a keepsake that you can treasure." (195mm x 130mm)

<http://belindagriffiths.net/>

Value \$250



39) Brian Nelson - 'Ed Wood' Wood Cut Print

Brian Nelson is a Wellington landscape painter, portrait and graffiti artist who works in the media of canvas, paint, charcoal and conte. He draws inspiration from local landscapes and figures, the modest and incidental structures you find in the environment.

This quirky sold out wood cut print is edition 1 of 15 and on 30 x 40cm paper.

<http://www.briannelson.co.nz>

Value \$80



40) Met Service - Hand Drawn Observation Chart of Cyclone Gita (20 February 2018)

The Met Service has kindly donated a copy of the hand drawn observation chart of Cyclone Gita, from 3pm on 20 February 2018. This chart was drawn by John Crouch, one of the Met Service's most experienced (and clearly artistic!) forecasters. A unique, conversation-provoking piece!



41) Museum of New Zealand Te Papa Tongarewa - Native Birds

The image used in this gorgeous print is a cromolithograph (c. 1900) by William Shaw Diedrich Schmidt. The birds in Schmidt's work were based on the artwork of J.G Keulemans in Walter Buller's *A History of the Birds of New Zealand*.

Professionally framed in dark stained wood, measuring 743mm x 580mm.

Value \$250 framed



42) Dreamworks - Zooster Shapes Study

This lithographic print was kindly donated by a Seatoun School film family, and depicts a key development piece in establishing the main characters in the 2005 hit animated movie 'Madagascar'.

Measuring 365mm x 240mm (mount 454mm x 355mm), this print would look great on the wall of any animation enthusiast!

Value \$60



43) Tora Farmhouse - Print

Local artist, Brian Nelson, has kindly donating this original mezzotint print, set in a farmhouse near the Tora Coastal Walk in the Wairarapa.

A mezzotint print is made by engraving an image onto a metal plate and then printing it.

This unframed print is #2 of 15 and measures 35.5 cm x 25 cm.

Value \$90



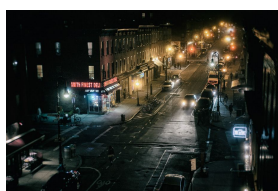
44) Untitled 1, Original Work

Local artist, Chris Hall has kindly donated this vibrant piece depicting landmarks from the local area — scenes from Seatoun and Karaka Bay Wharves, Seatoun Tunnel, Churchill Park, Worser Bay, the 4 Square, Scorch-o-rama and out over Steeple Rock and Pencarrow.

Measuring 1150 mm x 400 mm, this original work will remind you of your favourite local spots.

Value \$50

Photography



46) Birgit Krippner - 'Brooklyn NY, Smith Street 2014' Photographic Print

Born in Austria, award winning photographer Birgit Krippner has lived in NZ since 2003. Her specialty is capturing candid images using only available light - often working in low light situations, relying on fast lenses. Birgit has exhibited internationally, including in New York, San Francisco, UK, Paris, Berlin, Copenhagen, Auckland, Napier, Havelock North and Wellington.

This visually stunning and almost melancholic street view photograph was taken of Smith Street, Brooklyn New York. Measures 430mm by 280mm unframed.

<http://www.birgitkrippner.com>

Value \$900



47) Richard Abbott - 'To the Lighthouse' Framed Photographic Print

Richard has kindly donated this mesmerising black and white seascape photograph, taken of a wave breaking on rocks on the Miramar Peninsula just South of Breaker Bay during a winter Southerly storm. Pencarrow Head lighthouses are in the background. Technical details - 1/13th sec at f/18, ISO 100, 1/1.

This 485mm by 485mm framed photograph is an eye catching piece that will be a beautiful addition to one lucky bidder's walls.

<http://www.richardabbottartphoto.com>

Value \$450



48) Liz Ritchie - 'Surf's Up, Breaker Bay' Framed Limited Edition Photographic Print

Seatoun artist and photographer Liz Ritchie is renowned for her paintings and photography of our beautiful surrounds - inspired by our changing light and weather conditions.

Liz has kindly donated 'Surfs Up, Breaker Bay' a limited edition (1 of 8) photograph mounted in a black frame, taken during a storm across Breaker Bay (41 x 36 cm).

<http://www.lizritchie.com/>

Value \$120



49) Liz Ritchie - 'Pohutakawa Tree' Framed Limited Edition Photographic Print

Liz has also kindly donated 'Pohutakawa Tree' - a limited edition (1 of 12) photograph mounted in a black frame, taken of the old Seaton School in Ventnor Street, where the artist was a pupil (410mm x 360mm).

<http://www.lizritchie.com/>

Value \$120



50) Luminz - 'At Home in the Stars' Photographic Print

This breathtaking nightscape image of Wellington's night sky "At Home in the Stars" was captured by Jonathan Usher, Luminz Photography. In this piece you can see the enormous arc of the Milky Way sweeping above Wellington, the faint glow of the Aurora Australis in the far south towards Antarctica, and the distant lights of the southern suburbs.

Printed on highest quality fine art paper with acid-free mat and backing.

Dimensions - photo 450mm x 300mm, mount 600mm x 460mm.

<http://www.luminz.co.nz>

Value \$175



51) Mark Gee - 'Horizon' Photographic Print

Mark Gee is an award winning photographer and time-lapse filmmaker who often ventures out to the darkest, most remote skies all around the country, enjoying the challenge of combining New Zealand's striking landscapes with the ethereal beauty of the night sky in new, creative ways.

Mark has kindly donated two copies of this stunning photograph - the top two bids will take these home. Shot in the beautiful Wairarapa, this breathtaking photograph 'Horizon' captures the calm of the shore against the stunning light of the night sky.

Dimensions - photo 495mm x 415mm, mount 600mm x 520mm.

<http://theartofnight.com>

Value \$600 each. Top two bids will win.



52) Sandy Connon - Black & White Photography Package

Leading contemporary portrait photographer Sandy Connon has been creating outstanding black and white portraits for over two decades. Her warmth and humour allow her to capture the essence and spirit of her subjects and preserve them in an image for you to enjoy forever.

Sandy is donating a **photography package comprising a sitting plus a 16" x 20" print** for you to treasure forever.

Must be booked by 30/9/2018.

<http://www.sandyconnon.co.nz/>

Value \$990



53) Be inspired with an Inspire Photography Package!

Inspire photography pride themselves in delivering naturally beautiful portraits of babies, children and families of any age. They are award winning professional wedding, portrait and commercial photographers.

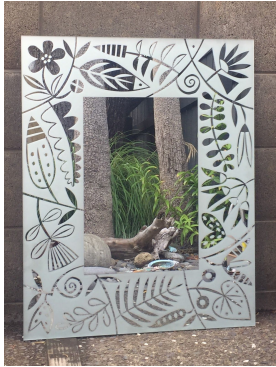
This package includes a **family portrait sitting** valued at \$150 with an additional \$150 towards any purchase.

Expires 31/08/18

<http://www.inspirephotography.co.nz>

Value: \$300

Decorative Pieces



57) Basia Smolnicki - 'Through the Looking Glass' Etched Mirror

Basia Smolnicki is a Wellington based printmaker artist specialising in traditionally handcrafted fine art prints and etched glass used as functional and decorative features in homes and interiors.

This mirror with etched frieze catches the light beautifully and will be a gorgeous piece to display in the lucky bidder's home (600mm x 750mm).

<http://www.basiasmolnicki.com>

Value \$450



58) Nicola Dench - 'Earth King & Queen' Ceramic Vessels

Award winning ceramic artist Nicola Dench has kindly donated these stunning ceramic vessels, Earth King and Earth Queen.

The earthen clay has thin layers of black ink creating feathered 'landlines', giving rise to the works' name. Each piece (375mm high) could hold a single flower stem or an incense stick, but they look magnificent just as they are.

<http://claypenguin.co.nz>

Value \$500



59) Melissa Young - Peggy Sue Bronze Sculpture

Award-winning Wellington based sculptress Melissa Young's bronze figurines are a social commentary on life — often using tongue-and-cheek humour to convey challenging ideas or themes.

Part of Melissa's 'Tiny but Lively' series, this little bronze sculpture (95mm high by 85mm wide) bound by a washing peg is a sweet little addition to prop up on a side table.

<http://www.melissayoung.co.nz>

Value \$165

